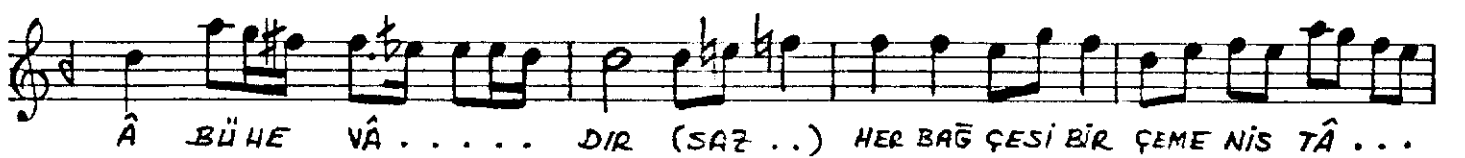
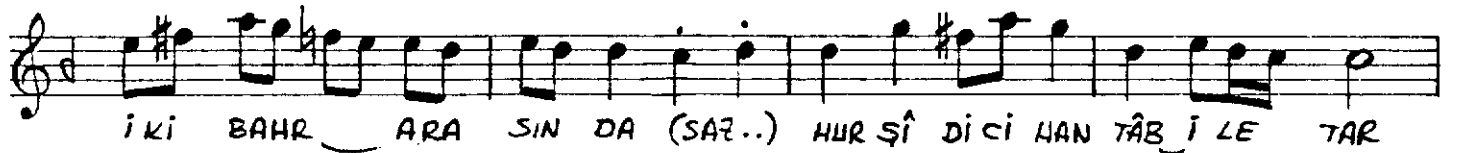
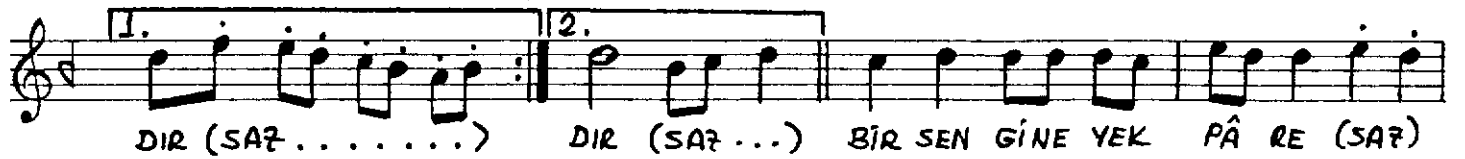


Usûlû : SOFYAN (J=76)

UŞŞAK ŞARKI
(Bu şehr-i İstanbul ki..)

Güfte : NEDİM
Beste : ÂRİF SÂMİ TOKER



... NİLE TÂ..... FET (SAZ...) HER GÜ ŞESİ BİR MEC Lİ Sİ PÜR

SEMÂÎ (♩ = 152)

FEY ZÜSE FÂ..... DİR (SAZ..) (ARA SAZI.....)

NÂ MI Gİ Bİ OL.. MUŞ... TUR O HEM

SÂD..... HEM... Â..... BÂD İS TAN BU LA

SER.. MÂ.. YE İ FAH... ROL... SA RE VÂ..

..... DİR (SAZ...) KÛH SAR LA RI BAĞ.. LA RI..

KA SIR LA RI.... HEP GÛ YÂ.. Kİ BÜ TÛN..

..... ŞEV KÜ TA RAB ZEV KÜ SA FÂ.... DİR

ZEV... KÜ SA FÂ.... DİR İS TAN BULUN EV

SÂ.. FİNİ MÛM KÛN MÛBE YAN..... HİÇ (SAZ..) MAK SÛ DÜHE MAN

SAD RI KE REM KÂ RESE NÂ DİR SON.

E.B.